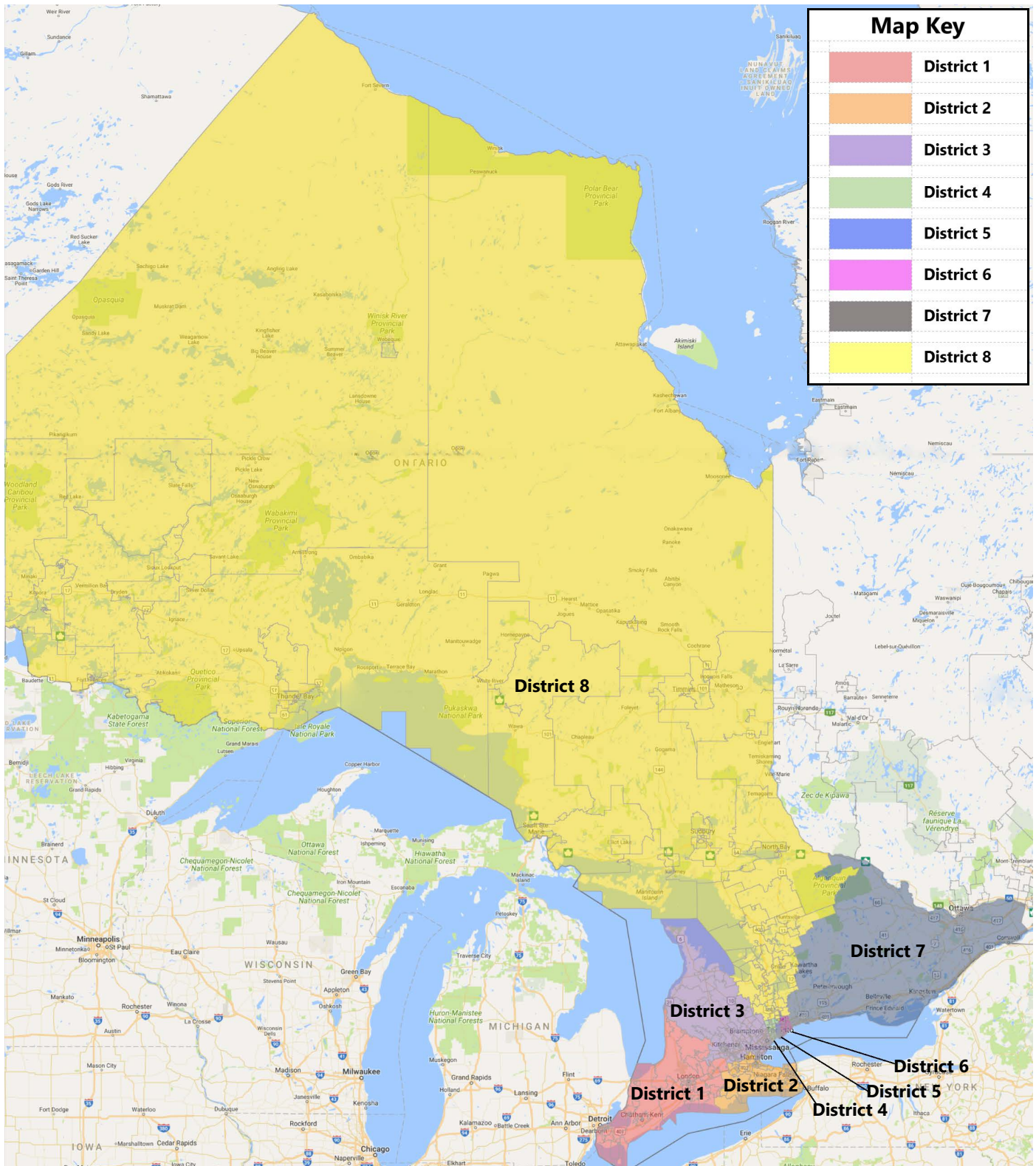
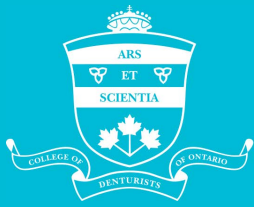


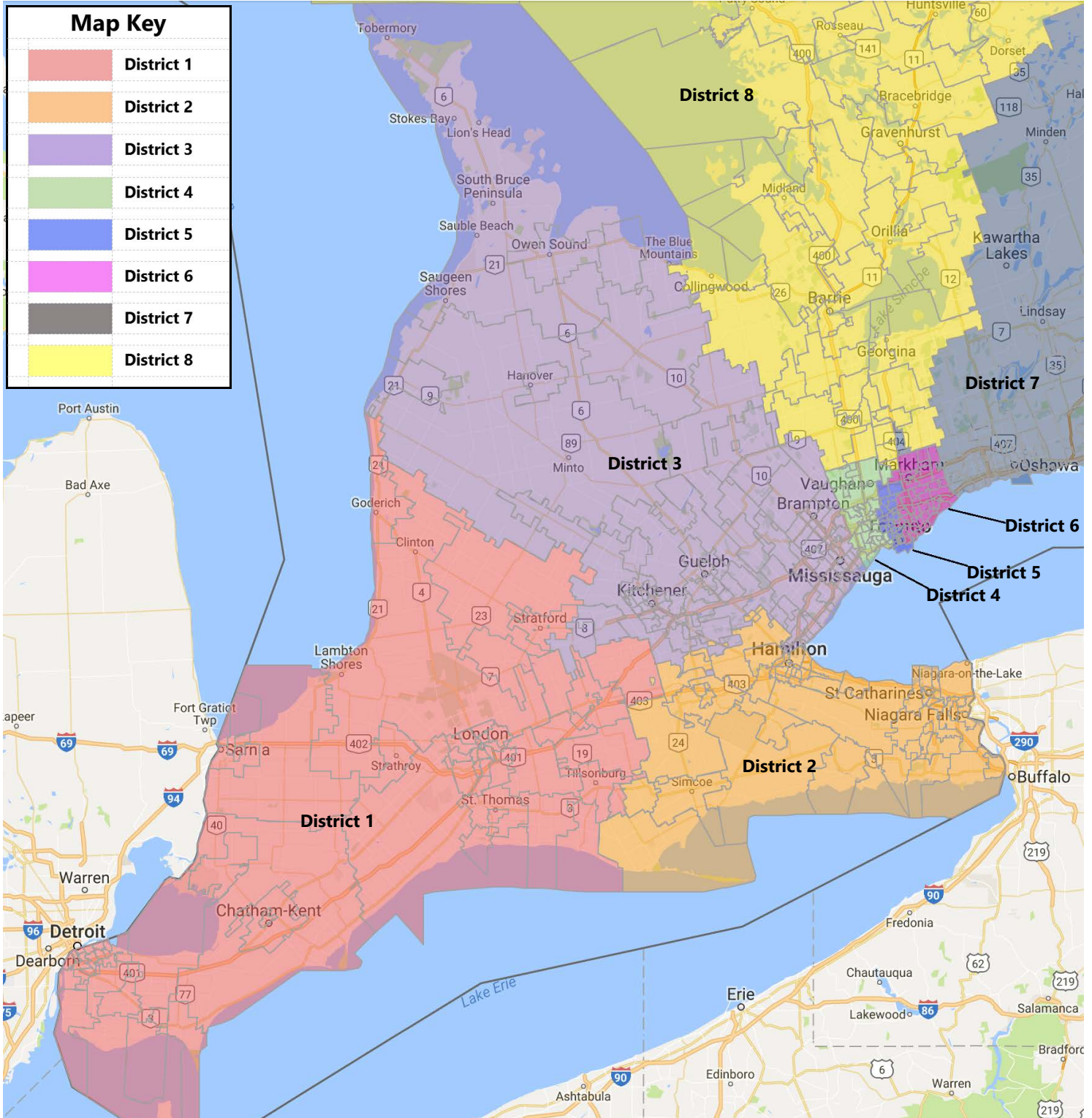
# Electoral Districts: 1 - 8



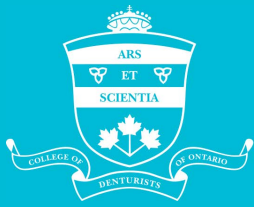




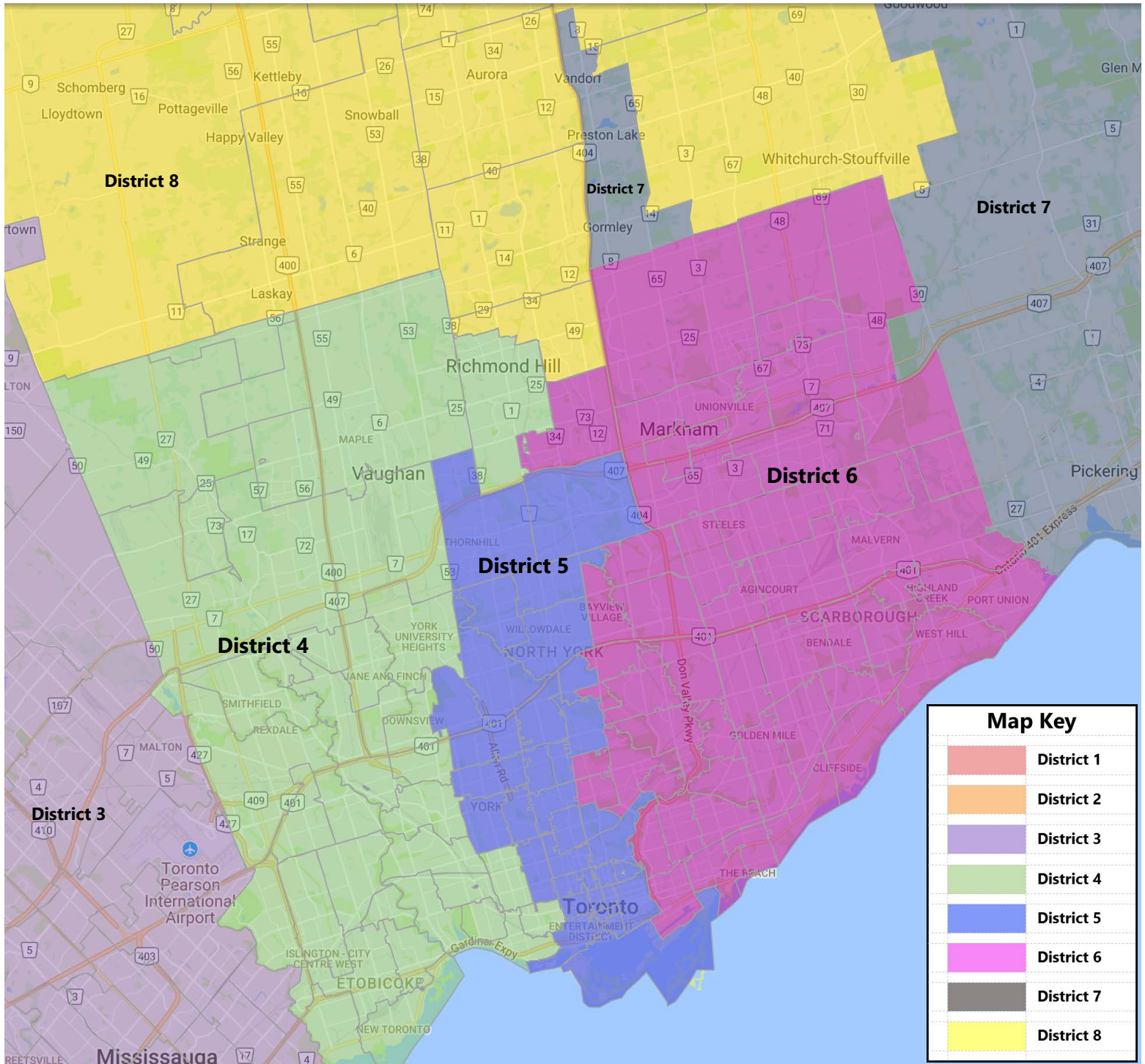
## Electoral Districts - 1, 2 & 3



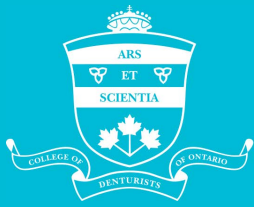




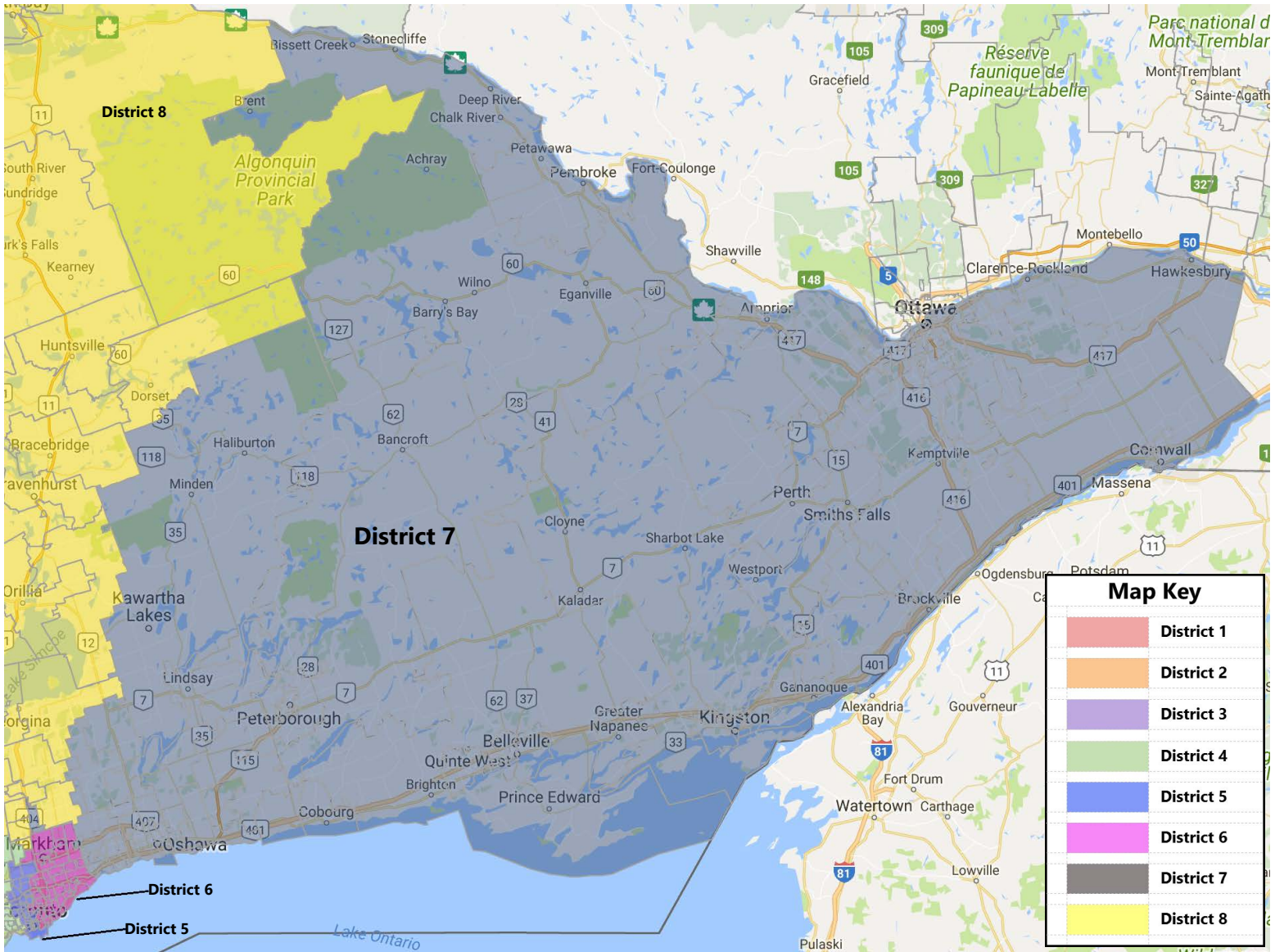
## Electoral Districts: 4, 5 & 6







## Electoral District: 7



# By-laws

## 10.02 Electoral Districts

The following electoral districts are established for the purpose of the election of Members to the Council. The Registrar may assign any new or missing postal codes to the district he or she believes is most appropriate.

**Electoral district 1**, composed of the south western Ontario communities served by the postal codes: N0J, N0K, N0L, N0M, N0N, N0P, N0R, N4G, N4S, N4T, N4V, N4X, N4Z, N5A, N5C, N5H, N5L, N5P, N5R, N5V, N5W, N5X, N5Y, N5Z, N6A, N6B, N6C, N6E, N6G, N6H, N6J, N6K, N6L, N6M, N6N, N6P, N7A, N7G, N7L, N7M, N7S, N7T, N7V, N7W, N7X, N8A, N8H, N8M, N8N, N8P, N8R, N8S, N8T, N8V, N8W, N8X, N8Y, N9A, N9B, N9C, N9E, N9G, N9H, N9J, N9K, N9V and N9Y;

**Electoral district 2**, composed of the south western Ontario communities served by the postal codes: L0R, L0S, L2A, L2E, L2G, L2H, L2J, L2M, L2N, L2P, L2R, L2S, L2T, L2W, L2V, L3B, L3C, L3K, L3M, L8B, L8E, L8G, L8H, L8J, L8K, L8L, L8M, L8N, L8P, L8R, L8S, L8T, L8V, L8W, L9A, L9B, L9C, L9G, L9H, L9K, N0A, N0E, N0S, N1A, N3L, N3P, N3R, N3S, N3T, N3V, N3W, N3Y and N4B;

**Electoral district 3**, composed of the central western communities served by the postal codes: L0N, L0P, L4T, L4V, L4W, L4X, L4Y, L4Z, L5A, L5B, L5C, L5E, L5G, L5H, L5J, L5K, L5L, L5M, L5N, L5P, L5R, L5S, L5T, L5V, L5W, L6H, L6J, L6K, L6L, L6M, L6P, L6R, L6S, L6T, L6V, L6W, L6X, L6Y, L6Z, L7A, L7C, L7E, L7G, L7J, L7K, L7L, L7M, L7N, L7P, L7R, L7S, L7T, L9E, L9T, L9V, L9W, N0B, N0C, N0G, N0H, N1C, N1E, N1G, N1H, N1K, N1L, N1M, N1P, N1R, N1S, N1T, N2A, N2B, N2C, N2E, N2G, N2H, N2J, N2K, N2L, N2M, N2N, N2P, N2R, N2T, N2V, N2Z, N3A, N3B, N3C, N3E, N3H, N4K, N4L, N4N and N4W;

**Electoral district 4**, composed of the portions of greater Toronto area communities served by the postal codes: L0J, L4C, L4H, L4K, L4L, L6A, M3J, M3L, M3M, M3N, M6H, M6J, M6K, M6L, M6M, M6N, M6P, M6R, M6S, M8V, M8W, M8X, M8Y, M8Z, M9A, M9B, M9C, M9L, M9M, M9N, M9P, M9R, M9V and M9W;

**Electoral district 5**, composed of the portions of greater Toronto area communities served by the postal codes: L3T, L4J, M2M, M2N, M2P, M2R, M3H, M3K, M4N, M4R, M4T, M4V, M4W, M4X, M4Y, M5A, M5B, M5C, M5E, M5G, M5H, M5J, M5K, M5L, M5M, M5N, M5P, M5R, M5S, M5T, M5V, M5W, M5X, M6A, M6B, M6C, M6E and M6G;

**Electoral district 6**, composed of the portions of greater Toronto area served by the postal codes: L3P, L3R, L3S, L4B, L6B, L6C, L6E, L6G, M1B, M1C, M1E, M1G, M1H, M1J, M1K, M1L, M1M, M1N, M1P, M1R, M1S, M1T, M1V, M1W, M1X, M2H, M2J, M2K, M2L, M3A, M3B, M3C, M4A, M4B, M4C, M4E, M4G, M4H, M4J, M4K, M4L, M4M, M4P and M4S;

**Electoral district 7**, composed of the eastern Ontario communities served by the postal codes: K0A, K0B, K0C, K0E, K0G, K0H, K0J, K0K, K0L, K0M, K1B, K1C, K1E, K1G, K1H, K1J, K1K, K1L, K1M, K1N, K1P, K1R, K1S, K1T, K1V, K1W, K1X, K1Y, K1Z, K2A, K2B, K2C, K2E, K2G, K2H, K2J, K2K, K2L, K2M, K2P, K2R, K2S, K2T, K2V, K2W, K4A, K4B, K4C, K4K, K4M, K4P, K4R, K6A, K6H, K6J, K6K, K6T, K6V, K7A, K7C, K7G, K7H, K7K, K7L, K7M, K7N, K7P, K7R, K7S, K7V, K8A, K8B, K8H, K8N, K8P, K8R, K8V, K9A, K9H, K9J, K9K, K9L, K9V, L0A, L0B, L0C, L0H, L1A, L1B, L1C, L1E, L1G, L1H, L1J, L1K, L1L, L1M, L1N, L1P, L1R, L1S, L1T, L1V, L1W, L1X, L1Y, L1Z, L9L and L9P; and

**Electoral district 8**, composed of the central and northern Ontario communities served by the postal codes: L0E, L0G, L0K, L0L, L0M, L3V, L3X, L3Y, L3Z, L4A, L4E, L4G, L4M, L4N, L4P, L4R, L4S, L7B, L9J, L9M, L9N, L9R, L9S, L9X, L9Y, L9Z, N4P, P0A, P0B, P0C, P0E, P0G, P0H, P0J, P0K, P0L, P0M, P0N, P0P, P0R, P0S, P0T, P0V, P0W, P0X, P0Y, P1A, P1B, P1C, P1H, P1L, P1P, P2A, P2B, P2N, P3A, P3B, P3C, P3E, P3G, P3L, P3N, P3P, P3Y, P4N, P4P, P4R, P5A, P5E, P5N, P6A, P6B, P6C, P7A, P7B, P7C, P7E, P7G, P7J, P7K, P7L, P8N, P8T, P9A and P9N.